



News to "Accent" your stitches, page 1

November 24, 2009

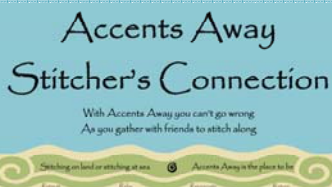
SHOP ACTIVITIES

BOOKMARK STITCH-ALONG
1st Saturdays 1-3 pm

WED. NIGHT SIT & STITCH
most Wednesdays 5-9 pm

SMALL PROJECT STITCH-ALONG
3rd Saturdays 1-3 pm
young stitchers welcome if accompanied by an adult.

STITCH-AWAY EVENT
ACCENTS AWAY
STITCHERS CONNECTION
JULY 30—AUG 1, 2010



SHOP SERVICES

Accents Exclusive Charts
designs by Accents available only from Accents

Custom Framing Options
Conservation Framing
Creative techniques
Shop-choice special pricing

Personalized Charting
from \$3 - priced by difficulty
charting of elements such as names, dates, chart rearrangements, special requests

Special Orders
We do our best to obtain requested items

Finishing Services
Stockings, pillows, etc
\$20-\$35 average cost
You provide fabric & ribbons

Gift Certificates
available in any amount

THANKSGIVING HOLIDAY HOURS

Wednesday, Nov. 25th . . . Fred will be here—
Gayle is taking the day off
Thursday, Nov. 26th . . . Closed
Friday, Nov. 27th . . . Fred will be here—
Gayle is taking the day off
Saturday, Nov. 28th . . . 10—5 (regular hours)



Do you realize that Christmas is only one month away. Are you stitching some of your holiday gifts? I am. Friday I'll be cocooning at home, staying far away from all of the Black Friday traffic, stitching and watching inspirational DVDs all day long. If anyone is interested in joining me, let me know by email and I'll give you directions to my house. It would be good to have some company, since Fred will be at the shop. . . . *gayle*



THE PICTURE ON THE FRONT OF THE CHART IS JUST THE BEGINNING OF THE DESIGN!

Thought I'd talk a little this week about what I LOVE to do with a chart. And that would be to look deeply into the design and take out the part I love, change the part I see differently and rearrange it so that it becomes uniquely mine. How does that occur? I'm using Courtney Collections' Gem Show #3 for my demonstration. The picture at the right (in red) is the picture shown on the cover of the chart. It was designed to be narrow and long. But suppose you need your picture to be more rectangular. You might pass this chart by, but that would be a mistake. Simply by taking the bottom half of the chart and moving it to the right side of the top half, you can create the design shown at the left. Looks like a totally different pattern, doesn't it. And very little effort was needed to make the change.



That's just one way you can create a *Continued on page 2*



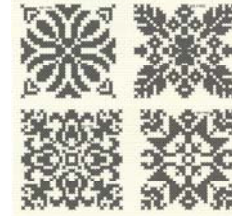
Saints Spirit 10 and 0

The team players are doing their part. Remember, our part as fans is to keep a positive attitude and atmosphere and to cheer them on.

Continued from page 1 a different design from this pattern. If you wanted a square picture, just take the four smaller motifs and arrange them side by side.



Or they could be used to stitch a bellpull, or individually for biscornus, in two rows of 2 designs as shown here at the right. Or you could repeat one or two of the patterns for a different effect.



The two larger designs near the center can be stitched separately for a beautiful ornament or as a double design as shown at left.

Or you might be looking for a fleur de lis corner chart. Look no further than the design at the top of the pattern as shown here by itself. You can stitch the entire design, leave off a portion of the design as shown, or even stitch just one of the fleurs. The choice is up to you!



And if you want to create a "frame" around some wording, that can be created as well. In the image below, we just took the 2 borders in the center and pieced them together. Or the same border could have been turned and the edges lined up for a frame.



It's even possible to create a corner when none is readily part of the design, but it gets just a bit more complicated than I can explain in print. Just be aware that there is infinitely more to a stitched design than the picture on the cover of the chart.



When you are looking for that special design and you have a chart with which to begin, remember that this is the part of the project that I love to do. I will be happy to help you create your unique rearrangement. I can verbally tell you what to do, or, if you need a bit more assistance, I can create the rearranged chart for you so that all you need to do is follow the new chart. The investment is your time to bring the original chart to the shop and a small fee if I am requested to create the rearranged chart. I can also add names and dates if you want to personalize the project.

... gayle

Appreciate your own uniqueness and self worth. You have something to give the world.



(located inside Galerie Severn)

(504) 888-2458

www.accentsinc.com

**3501 Severn Avenue, Ste 1B
Metairie LA 70002-3459**

Fred & Gayle Horton
Angela Kelly ♦ Janet Horton

gayle@accentsinc.com ♦ info@galeriesevern.com



Your fine art & framing partner

(504) 888-5361

www.galeriesevern.com